

SPECTRUM INFRARED

Heating Solutions

SureStart™ Control Cabinet & Heating Devices

SureStart™

“When Maybe Isn’t An Option.”

Switch Heater Controller

Spectrum’s **SureStart™** is a complete system which provides all necessary control features for electric switch heating devices.

The CUSTOMER-DRIVEN design offers simplicity, flexibility & safety.

- ✓ Drop & Go install – reducing labor cost.
- ✓ Standardized parts for easy maintenance – preventing down time.
- ✓ Available in 240/480 volt, single and 3 phase.

STANDARD FEATURES:

- Protected “Dead Front” inner panel.
- Safety/Service disconnect mounted on dead front.
- Remote start-up via dispatch or dual snow-sensor system.
- Manual override.
- Operation indicator signal.
- Nema-4, 14 gauge steel enclosure with 3 point door latch.
- Heavy-duty steel hasp for padlocks & steel lifting eyebolts.
- Individual ground fault protection.
- Individual DIN rail circuit breaker protection.
- Internal heater and light bar.

OPTIONAL FEATURES:

- 120 volt, 5 amp convenience outlet.
- Stagger start system.



1 - 6 CIRCUIT SYSTEMS



SPECTRUM INFRARED

A division of Advanced Detection Systems, Inc.

1440 E. 357th Street, Eastlake, Ohio 44095

440-951-6061 Main / 440-951-6687 Sales

440-951-6641 Fax / 800-605-9818 Toll Free

www.spectruminfrared.com

SPECTRUM INFRARED

Snow Melters and Crib Heaters

Keep switches clear of snow and ice

FLAT-JACKET™ SNOW MELTERS

Flat Profile Design – 570% Greater Contact To Rail Surface.

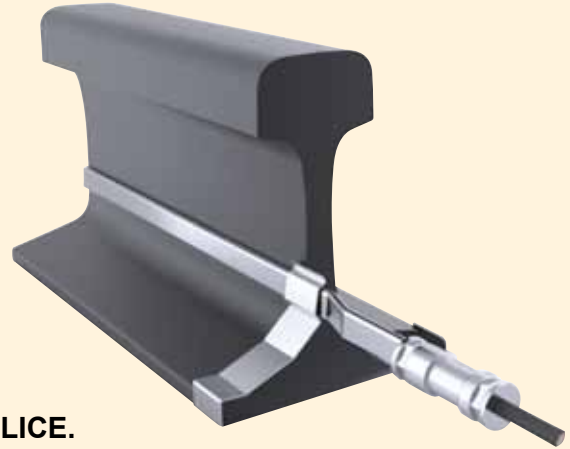
Industry Leading Lengths Up To 34 Feet With NO SPLICE.

Maximum Moisture Resistance – chemically treated magnesium oxide.

Single Ended Termination – quick and easy installation.

Stainless Steel Sheath – highly corrosion resistant.

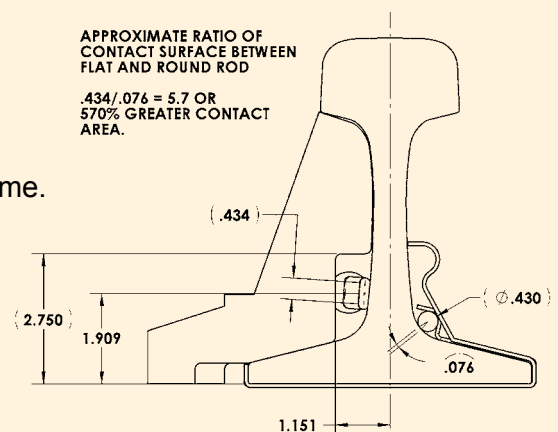
24-Hour Shipping On Standard Sizes – reduces down time.



SnapTite Rail Clip™

Easy Installation – no tools required, snaps onto base of rail with simple hand pressure.

Safety First – greatly reduces the possibility of a pinch point of flying metal.

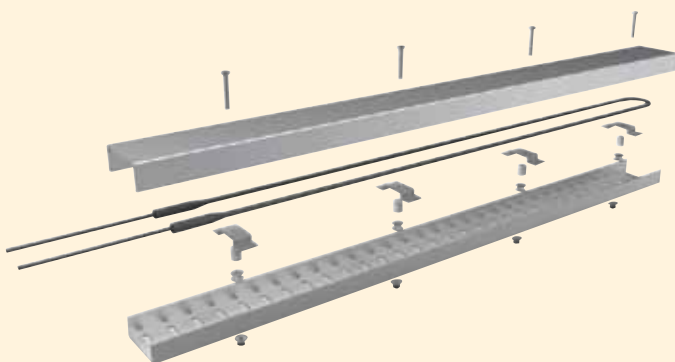


SHBC™ CRIB HEATER

Solid Aluminum Construction – highly corrosive resistant.

Vented Element Protection Plate – extends life of heating element.

- Standard size: 2" H x 5" W x 8' L.
- Rated up to 500 watts per foot.
- .43 dia. incoloy or stainless steel sheath.



Custom lengths, wattages, voltages and leads lengths are available on all heating products.