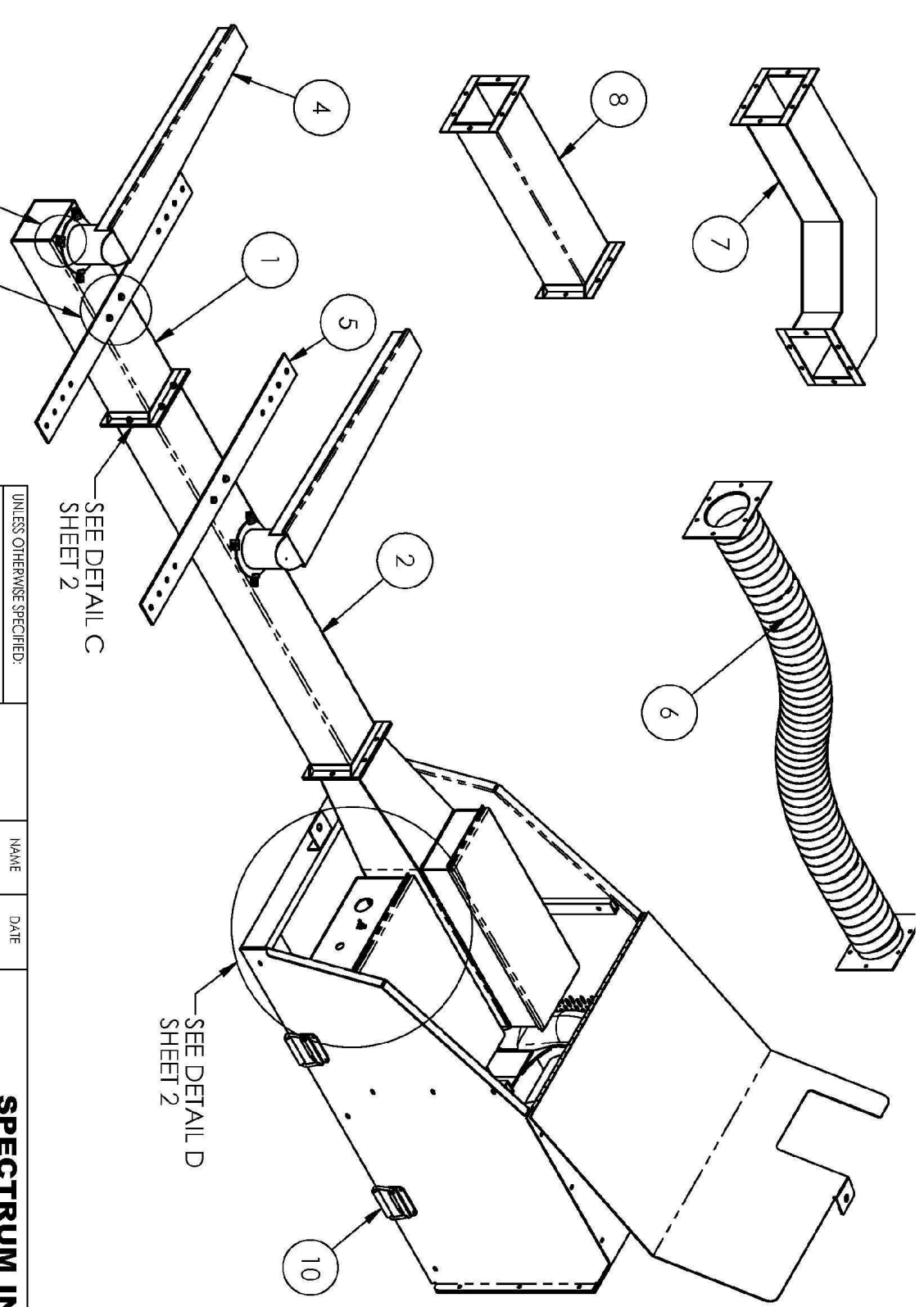




## RRSH STEP BY STEP INSTALLATION GUIDE

Please refer to drawing 100-300-IG

- 1. Bring power to the building pad.** Power supply was determined before an order was placed with Spectrum. Make sure that power supply cable is the right size for the unit ordered and that your electrical service is sufficient to operate the unit properly. *Low voltage will result in reduced heater effectiveness.*
- 2. Prepare a pad and set the main unit.** A level area of 6' X 6' needs to be present to set the unit. For *standard perpendicular installation* (DWG 100-300-IG) or if using *solid duct extensions* (#7, #8) the pad should be 9" below the top of the ties. If a *flexible duct extension* (#6) is used, the unit can be set within 12" above or below the top of tie. Hand work with shovels is usually adequate to accomplish this. Distance from rail varies but should never interfere with foul zone. To set the unit in place, use supplied load rated handles (#10).
- 3. Install main duct between the ties.** Determine the crib location for the main duct. When the nozzles are attached, they should be 5-10" from the points. Clear adequate ballast material to allow the duct to slide under the rail and be positioned. The isolated main duct comes in 2 sections. The closed end duct (#1) should be set approximately 6" from the outside rail. Then connect the open end duct (#2) to the closed end duct using the supplied hardware (Detail C).
- 4. Install nozzles.** The main duct came prepared with 2 holes and 8 nozzle clips attached. Adjust the clips to an outward position, set the nozzle (#4) in the holes and re-set the clips to an inward position (Detail A). Before tightening the nozzle clips, point the nozzles so that the greatest volume of air will flow between the points and the stock rail. Securely tighten the 8 clips.
- 5. Attach main duct tie downs** (Detail B, #5). The tie-downs attach to the main duct by the studs attached. The tie-down attach to the rail tie with lag bolts.
- 6. Attach main unit to main duct.** Simply connect six ¼ x 20 stainless bolts into Pem inserts.
- 7. Wire the main unit. BLOWER FAN ROTATION MUST BE VERIFIED FOR CORRECT DIRECTION AFTER ATTACHING 3 PHASE POWER TO POWER BLOCK. (Detail D) BLOWER FAN MUST ROTATE COUNTER-CLOCKWISE WHEN VIEWED FACING THE GRILL SIDE OF THE SWITCH HEATER. IF ROTATION IS INCORRECT, CHANGE ORIENTATION OF INPUT WIRES (L1, L2, L3) TO POWER BLOCK UNTIL CORRECT ROTATION IS OBTAINED. FAILURE TO VERIFY FAN ROTATION WILL CAUSE DAMAGE TO HEATER SECTION AND WILL VOID WARRANTY.**



SEE DETAIL A  
SHEET 2

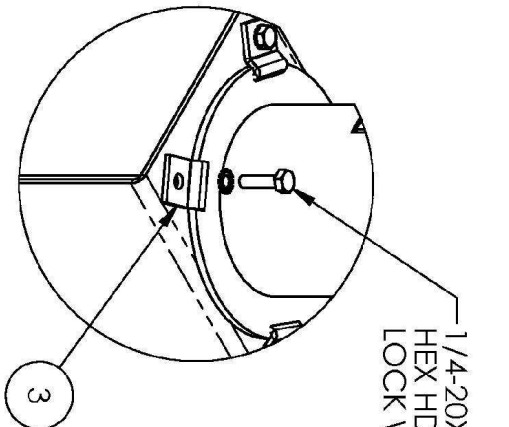
SEE DETAIL B  
SHEET 2

SEE DETAIL C  
SHEET 2

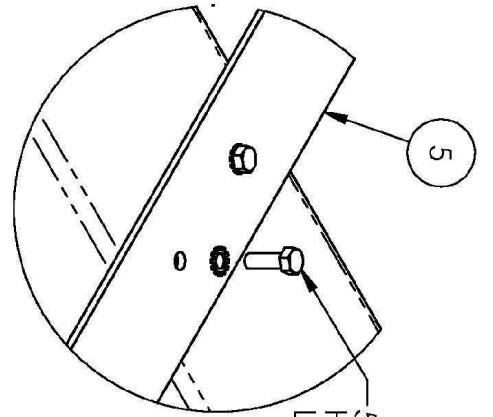
SEE DETAIL D  
SHEET 2

PROPRIETARY AND CONFIDENTIAL  
THE INFORMATION CONTAINED IN THIS  
DRAWING IS THE SOLE PROPERTY OF  
ADVANCED DETECTION SYSTEMS. ANY  
REPRODUCTION IN PART OR AS A WHOLE  
WITHOUT THE WRITTEN PERMISSION OF  
ADVANCED DETECTION SYSTEMS IS  
PROHIBITED.

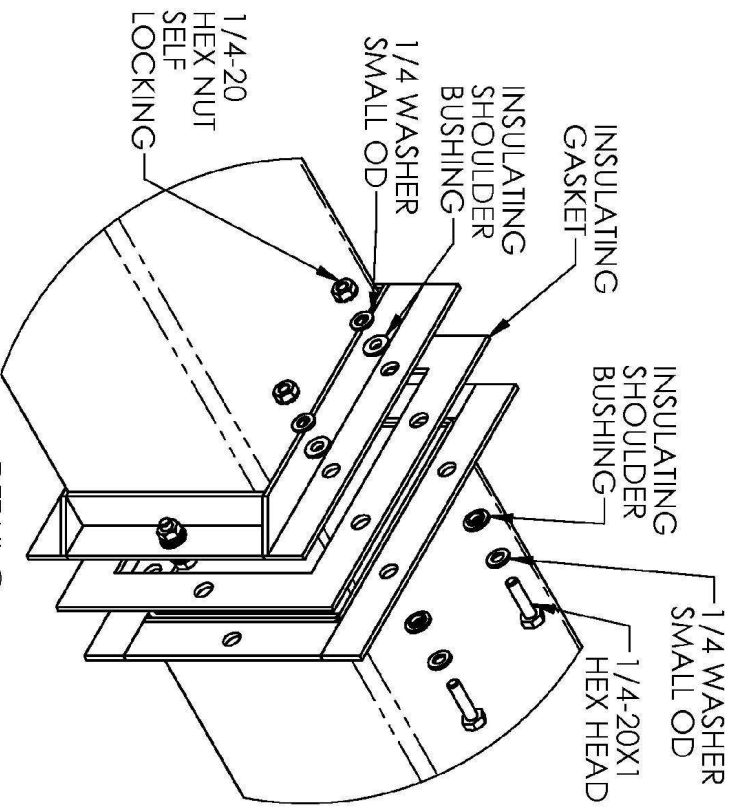
UNLESS OTHERWISE SPECIFIED:			
DIMENSIONS ARE IN INCHES		DRAWN	
TOLERANCES:		R.S.	
FRACTIONAL ±1/64	ANGULAR: MACH ±0.5 BEND ±1	CHECKED	DATE 6-4-10
TWO PLACE DECIMAL ±0.10	THREE PLACE DECIMAL ±0.05	ENG APPR.	
INTERPRET GEOMETRIC TOLERANCING PER:	Q.A.	MG APPR.	
MATERIAL		COMMENTS:	
FINISH			
NAME		DATE	
R.S.		6-4-10	
TITLE: DIVISION OF ADS, 1440 E357 ST., EASTLAKE, OHIO 44095			
<b>SPECTRUM INFRARED</b>			
SERIES 100-300 TRACK SWITCH HEATER			
INSTALLATION GUIDE			
SIZE	CAGE CODE	DWG. NO.	
<b>A</b>		<b>100-300-IG</b>	
SCALE: 1:1/2		SHEET 1 OF 1	



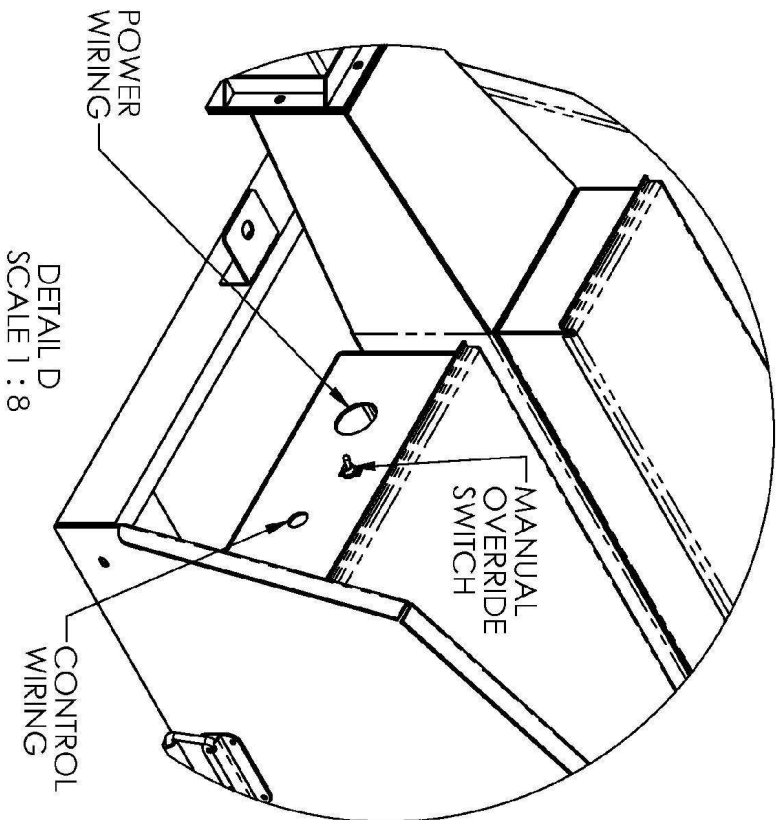
DETAIL A  
SCALE 1 : 4



DETAIL B  
SCALE 1 : 4



DETAIL C  
SCALE 1 : 4



DETAIL D  
SCALE 1 : 8

DRAWN	NAME	DATE
R.S.		6-4-10

<b>SPECTRUM INFRARED</b>	
DIVISION OF ADS, 1440 E. 357 ST., EASTLAKE, OHIO 44095	
SIZE	CAGE CODE
<b>A</b>	
DWG. NO.	
<b>100-300-IG</b>	

SCALE 1:12

SHEET 9 OF 9